

CHELAN COUNTY

MONTHLY FINANCIAL REPORT

AUGUST 2012



HIGHLIGHTS:

General Fund summary, projected and actual:

	Projected Year-to-Date	Actual Year-to-Date
Revenue	20,090,637	21,946,044
Expenditures	20,233,748	20,175,148
Net Income (Deficit)	(143,111)	1,770,896
Beginning Fund Balance	1,600,000	2,231,455
Current Fund Balance	1,456,889	4,002,351
Ending Cash Balance		5,100,469

The above projected numbers do not include emergency appropriations or unbudgeted revenue. Expenditures, revenues, and fund balances in this report are compiled on the modified accrual basis.



Prepared by:
Brad Posenjak, CPA
 Chief Deputy Auditor
 (509) 667-6655
brad.posenjak@co.chelan.wa.us

Previous monthly financial reports are available at http://www.co.chelan.wa.us/ad/accounting/county_budget.htm

GENERAL FUND - BY CATEGORY

Through August 31, 2012

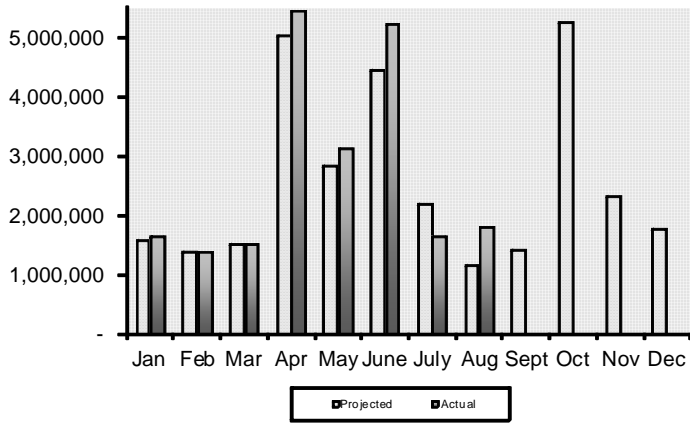
REVENUE	Month-To-Date			Year-To-Date		
	Projected	Actual	Variance	Projected	Actual	Variance
Property Tax	64,965	80,136	15,171	5,922,500	6,070,904	148,404
Sales Tax	517,931	494,696	(23,235)	3,094,830	3,248,890	154,060
Prop. Tax Penalty & Interest	42,065	64,303	22,238	508,700	868,273	359,573
Building and Planning Fees	87,579	110,355	22,776	617,561	744,116	126,555
PILT	0	0	0	2,175,200	2,313,538	138,338
PUD Priviledge Tax	0	0	0	975,000	1,368,421	393,421
Liquor X & P	0	0	0	88,338	121,985	33,647
Wenatchee Court	17,130	22,577	5,447	112,736	161,469	48,734
Law Enforcement Contracts	497,314	515,138	17,823	1,740,600	1,687,360	(53,240)
Recording Fees	11,390	16,593	5,203	91,915	102,561	10,646
Motor Vehicle Licensing	39,352	41,981	2,629	289,692	290,700	1,009
Probation Services	22,093	29,377	7,284	173,785	166,212	(7,573)
Interfund Payments	64,893	53,224	(11,670)	916,208	949,385	33,178
Court Fines	81,226	56,301	(24,925)	570,759	503,418	(67,340)
Treasury Interest	10,165	8,498	(1,666)	111,102	100,397	(10,705)
Grants\Entitlements	77,433	99,994	22,561	1,419,603	1,507,997	88,394
Other *	105,336	224,492	119,156	1,282,110	1,740,417	458,307
TOTAL	1,638,871	1,817,664	178,793	20,090,637	21,946,044	1,855,407

EXPENDITURES	Month-To-Date			Year-To-Date		
	Projected	Actual	Variance	Projected	Actual	Variance
10 - Salaries & Wages	1,217,573	1,192,006	(25,567)	9,516,775	9,396,825	(119,951)
20 - Personnel Benefits	463,803	440,356	(23,447)	3,757,299	3,619,374	(137,925)
30 - Supplies	55,082	35,905	(19,176)	341,464	414,877	73,413
40 - Other Services/Charges	378,909	327,477	(51,432)	3,216,383	3,309,934	93,551
50 - Intergovernmental Svcs	19,693	25,924	6,231	239,506	273,216	33,710
90 - Interfund Payments	287,817	287,524	(293)	3,162,322	3,160,922	(1,400)
00 - Reclassifications	0	0	0	0	0	0
TOTAL	2,422,877	2,309,192	(113,685)	20,233,748	20,175,148	(58,601)

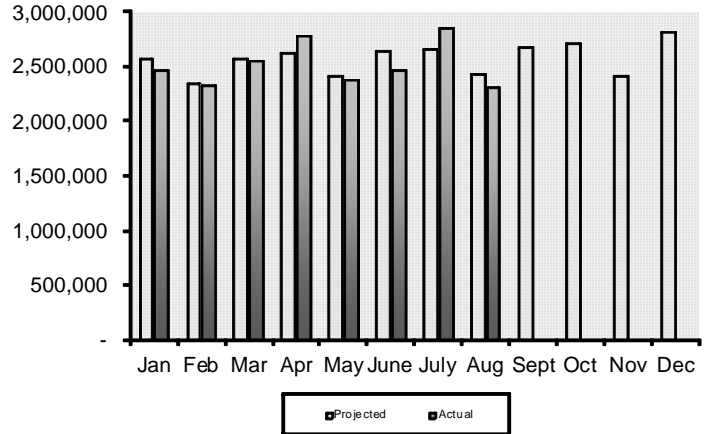
Projected columns are calculated by comparing actuals from the past five years on a monthly basis. The monthly averages are then applied to the 2012 budget.

* Other revenues include various small fees, grants, and state funds.

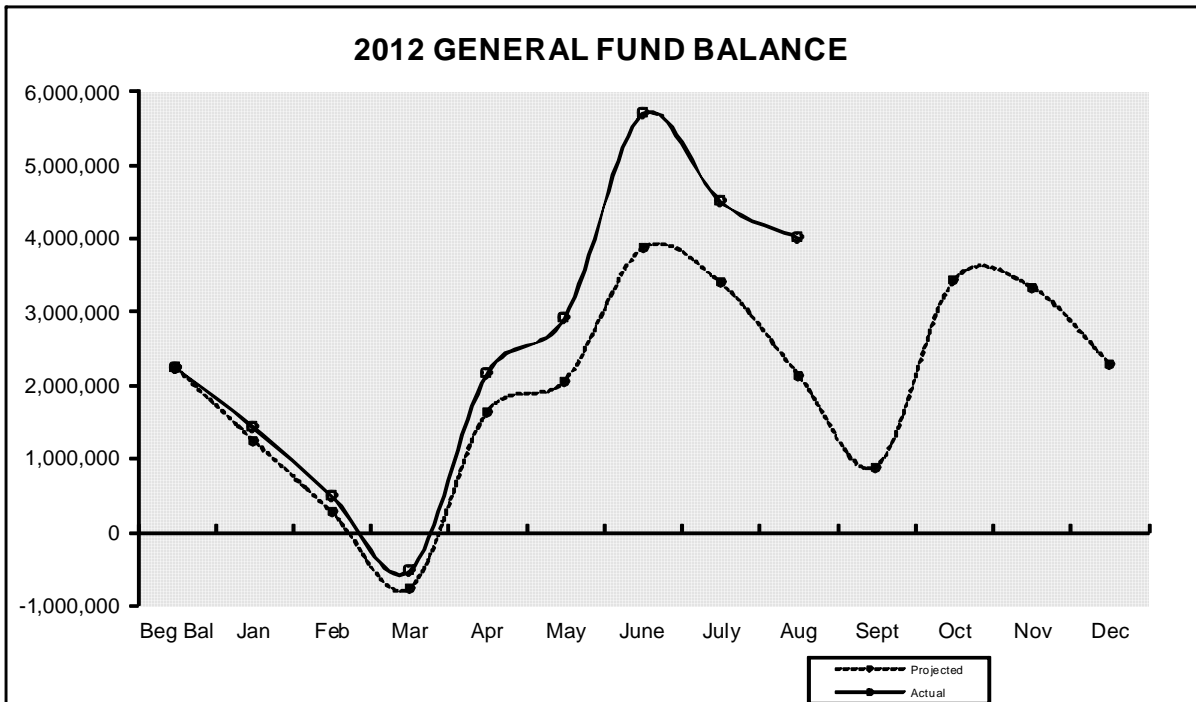
MONTHLY GENERAL FUND REVENUES



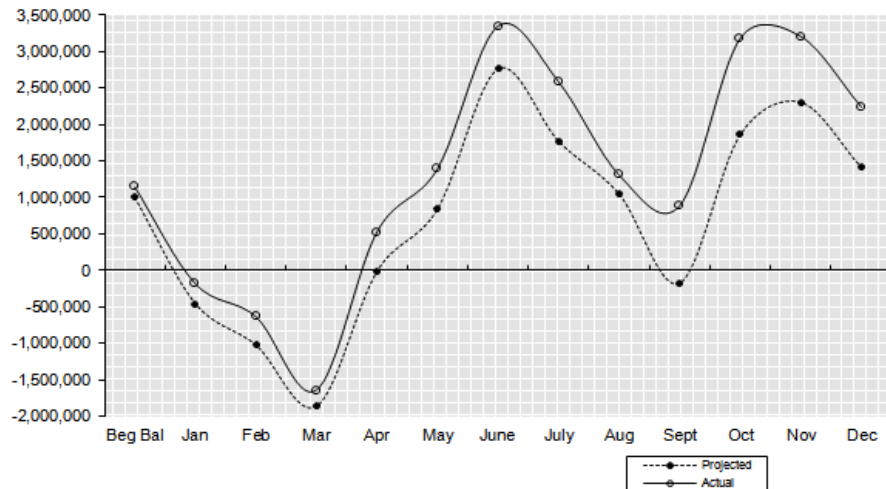
MONTHLY GENERAL FUND EXPENDITURES



2012 GENERAL FUND BALANCE



2011 GENERAL FUND BALANCE



REVENUE

Through August 31, 2012

GENERAL FUND

Dept # / Department	2012 Budget	2012 Actual	Balance	Percent Received
010 Reserve	0	336	(336)	100.0%
010 Assessor	40	71,798	(71,758)	179494.0%
015 Auditor	853,967	638,763	215,204	74.8%
020 Community Development	1,011,307	791,699	219,608	78.3%
040 Clerk	786,515	574,335	212,180	73.0%
045 Commissioners	9,153,453	7,809,398	1,344,055	85.3%
050 Coroner	15,000	15,892	(892)	105.9%
052 Information Technology	107,444	77,464	29,980	72.1%
055 Facilities Maintenance	634,294	432,664	201,630	68.2%
065 District Court	1,319,653	825,005	494,648	62.5%
066 District Court Probation	306,529	188,686	117,843	61.6%
075 Extension Services	56,385	32,231	24,154	57.2%
085 Juvenile Services	653,997	415,839	238,158	63.6%
105 Non-Departmental	623,440	464,829	158,611	74.6%
139 Child Support Enforcement	402,638	189,584	213,054	47.1%
140 Prosecuting Attorney	561,841	318,616	243,225	56.7%
145 Sheriff *	2,760,926	1,850,425	910,501	67.0%
155 Superior Court System	89,951	66,303	23,648	73.7%
165 Treasurer	1,093,218	1,111,273	(18,055)	101.7%
170 Property Taxes	10,572,216	6,070,904	4,501,312	57.4%
TOTALS	31,002,814	21,946,044	9,056,770	70.8%

SPECIFIC FUNDS

Fund	2012 Budget	2012 Actual	Balance	Percent Received
110 County Roads	17,422,317	6,139,692	11,282,625	35.2%
119 Ohme Gardens	206,690	156,121	50,569	75.5%
125 Horticulture	121,758	65,446	56,312	53.8%
128 Noxious Weed	299,951	141,724	158,227	47.2%
180 Natural Resources	3,977,152	567,736	3,409,416	14.3%
405 Wenatchee River Park	242,250	205,263	36,987	84.7%
410 Expo Center	146,162	88,104	58,058	60.3%
411 Fair	173,500	60,091	113,409	34.6%
450 Regional Justice Center	8,179,838	5,453,421	2,726,417	66.7%
510 ER&R	2,855,949	1,330,061	1,525,888	46.6%
530 Motor Pool	946,724	775,386	171,338	81.9%

* Includes additional revenue budget than what was originally budgeted

EXPENDITURES

Through August 31, 2012

GENERAL FUND

Dept # / Department	2012 Budget	Budget Adjs	2012 Actual	Balance	Percent Expended
010 Assessor	1,107,849	0	690,038	417,811	62.3%
015 Auditor	1,058,166	0	698,434	359,732	66.0%
016 Board of Equalization	7,045	0	3,486	3,559	49.5%
020 Community Development	1,476,894	0	866,209	610,685	58.7%
030 Civil Service Comm	11,097	0	3,607	7,490	32.5%
040 Clerk	1,014,020	0	662,259	351,761	65.3%
045 Commissioners	657,054	0	462,064	194,990	70.3%
050 Coroner	168,850	0	96,007	72,843	56.9%
052 Information Technology	600,422	0	392,131	208,291	65.3%
055 Facilities Maintenance	1,466,271	0	859,303	606,968	58.6%
065 District Court	1,131,163	7,708	711,686	427,185	62.5%
066 District Court Probation	405,227	0	261,796	143,431	64.6%
075 Extension Services	275,735	0	170,830	104,905	62.0%
085 Juvenile Services	2,598,999	0	1,676,966	922,033	64.5%
105 Non-Departmental	7,215,183	225,000	4,896,176	2,544,007	65.8%
139 Child Support Enforcement	354,044	0	200,267	153,777	56.6%
140 Prosecuting Attorney	1,792,224	0	1,161,091	631,133	64.8%
145 Sheriff	7,982,690	75,000	5,372,734	2,684,956	66.7%
155 Superior Court System	963,606	0	622,323	341,283	64.6%
165 Treasurer	577,206	0	367,741	209,465	63.7%
TOTALS	30,863,745	307,708	20,175,148	10,996,305	64.7%

SPECIFIC FUNDS

Fund	2012 Budget	Budget Adjs	2012 Actual	Balance	Percent Expended
110 County Roads	17,803,477	0	7,086,295	10,717,182	39.8%
119 Ohme Gardens	227,142	0	136,243	90,899	60.0%
125 Horticulture	134,149	0	67,639	66,510	50.4%
128 Noxious Weed	311,633	0	176,817	134,816	56.7%
180 Natural Resources	3,999,676	0	811,740	3,187,936	20.3%
405 Wenatchee River Park	266,345	0	140,525	125,820	52.8%
410 Expo Center	136,308	0	91,137	45,171	66.9%
411 Fair	172,166	0	71,558	100,608	41.6%
450 Regional Justice Center	8,430,974	0	5,455,740	2,975,234	64.7%
510 ER&R	2,767,380	0	1,921,316	846,064	69.4%
530 Motor Pool	948,329	0	743,724	204,606	78.4%

CASH & INVESTMENTS

Fund	June 30, 2012 Cash & Investments	July 31, 2012 Cash & Investments	August 31, 2012 Cash & Investments
010 General	7,022,590	6,101,219	5,100,469
110 County Roads	5,618,863	4,481,253	3,842,794
119 Ohme Gardens	88,453	101,232	122,357
125 Horticulture Pest & Disease	47,758	35,997	41,295
128 Noxious Weed	31,383	12,251	3,959
140 Cashmere-Dryden Airport	32,956	32,703	31,257
180 Natural Resources	60,404	65,516	15,461
190 Criminal Justice Tax	1,090,285	1,144,590	1,202,502
301 REET 1	1,159,951	1,241,211	1,289,161
405 Wenatchee River Park	119,965	138,261	145,600
410 Expo Center	22,324	17,272	25,270
411 Fair	52,805	49,026	12,468
450 Regional Justice Center	944,667	883,829	893,634
510 ER&R	1,447,288	1,432,617	1,625,916
526 Health Insurance	239,604	226,469	228,582
530 Motor Pool	181,371	106,581	38,740
535 Unemployment Comp	105,995	118,781	113,671
540 Tort Claims & Insurance	257,381	549,979	500,010

Accounts Receivable Outstanding Older than 30 days

Auditor

010015-01270	7/1/2010 North Meridian Title & Escrow	7,069.00
010015-01281	7/19/2010 North Meridian Title & Escrow	3,019.00
010015-01599	6/1/2012 DSHS - MA	248.00

Commissioners

010045-00084	6/29/2012 DSHS	214.13
--------------	----------------	--------

Juvenile

010085-01160	7/10/2012 Juvenile Rehab Admin Reg 1	0.03
--------------	--------------------------------------	------

PACSE

010139-00116	7/30/2012 DSHS DCS	2,035.00
010139-00117	7/30/2012 DSHS DCS	29,418.00
010139-00118	7/30/2012 DSHS DCS	26,573.00
010139-00119	7/30/2012 DSHS DCS	26,576.00

Sheriff

010145-01012	6/29/2012 WASPC	22,789.62
010145-01015	7/12/2012 Grant County DEM	29,259.44
010145-01017	7/24/2012 Lake Chelan School District	23,347.50
010145-01018	7/24/2012 Rivercom	670.06

Superior Court

010155-00027	6/12/2012 AOC	5,646.87
--------------	---------------	----------

Public Works

110001-00523	6/25/2012 Selland Construction, Inc	75.00
401001-01965	5/25/2012 WA St Dept of Ecology	20,071.53
401001-02011	7/20/2012 WA St Dept of Ecology	6,837.78
510001-00813	5/25/2012 Chelan County Coroner	157.57
530001-00109	7/13/2012 Chelan Co. Noxious Weeds	1,414.00

Noxious Weed

128001-00049	6/12/2012 WA St Dept of Ecology	86.00
--------------	---------------------------------	-------

Parent Education

136001-00022	3/6/2012 Council for Children/Families	34.97
--------------	--	-------

Community Services & Housing

163001-00014	10/7/2010 DCTED - OCD - Housing Div	22,727.95
--------------	-------------------------------------	-----------

Natural Resources

180001-00708	12/31/2011 WA St Dept of Ecology	9,191.01
180001-00713	12/31/2011 National Fish & Wildlife Found	2,022.12
180001-00714	12/31/2011 National Fish & Wildlife Found	18,641.10
180001-00720	12/31/2011 Emergency Management WA	1,136.31
180001-00731	5/1/2012 WA St Dept of Ecology	5.00
180001-00745	5/22/2012 National Fish & Wildlife Found	1,391.68
180001-00748	7/9/2012 Upper Col Salmon Rec Board	123,293.71
180001-00753	7/19/2012 WA St Dept of Ecology	6,626.30
180001-00755	7/19/2012 WA St Dept of Ecology	4,951.88

CASA

191001-00111	07/03/2012 Regina McDougall, AOC	1,808.51
--------------	----------------------------------	----------

Substance Abuse

193001-00167	05/23/2012 DSHS	58,481.00
193001-00170	06/27/2012 DSHS	1,631.02
193001-00172	06/27/2012 DSHS	709.05
193001-00173	07/18/2012 DSHS	74,633.00
193001-00174	07/18/2012 DSHS	13,198.00
193001-00177	07/19/2012 DSHS	5,383.21

Regional Justice Center

450001-01865	05/24/2011 DHS/ICE	147.00
450001-01876	06/06/2011 DHS/ICE	367.50
450001-01909	07/05/2011 DHS/ICE	955.50
450001-01941	08/02/2011 DHS/ICE	294.00
450001-01944	08/02/2011 Score	2,730.00
450001-01973	09/05/2011 DHS/ICE	441.00
450001-02014	10/04/2011 DHS/ICE	220.50
450001-02052	11/02/2011 DHS/ICE	1,617.00
450001-02083	12/05/2011 DHS/ICE	588.00
450001-02114	12/31/2011 DHS/ICE	661.50
450001-02142	02/02/2012 DHS/ICE	882.00
450001-02197	04/09/2012 DHS/ICE	441.00
450001-02232	05/07/2012 DHS/ICE	441.00
450001-02264	06/06/2012 DHS/ICE	441.00
450001-02294	07/04/2012 City of North Bend	2,660.00
450001-02307	07/26/2012 Department of Corrections	880.20
450001-02310	07/26/2012 Disability Determination SVCS	22.00

Health Insurance

526001-00003	12/31/2010 Daryl Mathena	241.03
526001-00004	3/8/2011 Daryl Mathena	458.78

If any of these outstanding receivables have been paid, will not be paid, or need adjustment,
please contact the Chelan County Auditor's Accounting Office.